

*oxytech*  
Powders that Excite!



AUSTRALIAN COLOUR SELECTOR



 **OXYPLAST**  
Powder Coatings





Oxytech is the sole official business partner and distributor for RAL Colours in Australia. Since beginning with 40 colour standards in 1927 RAL Colours today has become a global leader in standardising colour with 2,328 colours across RAL CLASSIC, RAL EFFECT and RAL DESIGN systems.



By using officially licenced RAL Colour products, manufacturers of paint, powder coat, plastic or textiles can produce to a uniform colour standard, harmonising colour across diverse projects.

Colour is critical whether you are designing high-rise buildings, manufacturing combine harvesters or coating outdoor furniture. RAL colours are the definitive reference material used worldwide for architectural, commercial, design, and manufacturing industries as they provide colour consistency for an achievable, uniform finish. Offering a precise and unified colour palette across all media leads to higher quality outcomes and many satisfied clients.

RAL Colour systems are available across several products, which suit different industries and uses.

For more information head to [www.ralcolours.com.au](http://www.ralcolours.com.au)



#### RAL CLASSIC:

- 213 colours
- Contains International Safety and Signalling colour standards
- Industry standard for many OEM companies and governing bodies
- Available in fan decks, single sheets, A4 binder and box sets

#### RAL DESIGN:

- 1625 colours
- A matrix of colour and shades logically arranged
- Available in fan decks, single sheets, binder and box sets

#### RAL EFFECT:

- 420 solid colours, 70 metallic colours
- Colours are placed in families of 6 solid colours and 1 metallic colour
- Used primarily for the paint and lacquer industry
- Available in fan decks, single sheets and box sets

#### RAL PLASTICS:

- 105 x 148 x 3mm polypropylene sample panels
- Each colour panel displays varying finishes, thicknesses and opacities achieved
- Protective sleeve for each panel contains reflectance curve, absolute values and divergence from original

#### RAL DIGITAL.

- Contains all 2,328 RAL colours from all ranges
- RAL Colours can be exported into many popular CAD and design programs
- RAL iColours App available for Apple and Android devices
- RAL Colourcatch Nano to capture the equivalent RAL colour



**RAL Colours**  
*Australia*

Shop online @

[ralcolours.com.au](http://ralcolours.com.au)



## Powders Built to Suit the Application

Oxyplast Powder Coatings have specifically developed a range of PR, PE and PX grade polyester powders to withstand Australia's harsh weather conditions, for which Oxytech provides exclusively to the Australian market

### Benefits of this range include:

- Decorative, durable finishes with superior coverage and substrate hiding protection
- Meets global quality standards including Qualicoat & AAMA
- Out Gassing Tolerance (OGT) for porous, cast substrates, zinc coated steel and media blasted metals to greatly reduce 'pin-holing'
- Advanced film-build on edges for crucial protection
- High performance pigments and resins for excellent UV stability and weathering
- Suitable for a wide range of substrates, including architectural aluminium, structural steel, zinc coated steel, media blasted metals, steel and alloy castings, as well as many other ferrous and non-ferrous substrates



## Primed to Beat Corrosion

To maximise the lifespan of your powder coated finish, Oxytech recommends using a suitable primer as part of the coating process. All Oxyplast primers supplied by Oxytech offer the same out gassing tolerance and advanced edge film-build characteristics as the PR, PE & PX polyester powder coatings with the added strength of epoxy resin systems. Oxyplast 'Zincoprime' is a zinc-rich, pure epoxy primer which provides excellent corrosion resistance over media blasted steel. Oxyplast 'Epoxyprime' is a pure epoxy primer used over aluminium and zinc coated steel applications where the zinc content is not required or recommended. Both primers are highly recommended for extensive, heavy industrial and environmental applications.

## Looking After the Finished Product

Maintain both the aesthetic and functional properties of your powder coated finish by regularly cleaning the coated surface every six months. In harsher environments with high levels of salt deposits or pollutants, such as coastal or industrial areas, cleaning should be as frequent as every three months. This will keep your powder coatings looking good for many years.

Cleaning is simple...

1. Remove coarse or loose dirt with a soft, wet sponge or cloth.
2. Wash the powder coated finish with a warm, mild detergent solution to remove any salt, dust and other deposits with a soft cloth, sponge or brush.
3. After cleaning, rinse the coating with clean, fresh water

Be careful not to use harsh, abrasive materials or cleaners, like steel wool, scouring pads, scrapers, or aggressive liquids or cleaning powders, as this can scratch and dull the powder coated finish. If solvents must be used, mild solvents such as White Spirits, Turpentine or Oxytech Prepwash are recommended. Always test a small, unseen area of the coating prior to cleaning with solvents.

# TraditionalLiving

Australia's Lifestyle Essentials



**Thredbo White**  
Gloss PR12/4914/C7



**Surfmist**  
Satin PR12/4761/CS3  
Gloss PR12/4761/C6



**Gull Grey**  
**Shale Grey** ●  
Satin PR12/60464/CS6



**Dune Birch Grey** ●  
Satin PR12/61257/CS8  
Gloss PR12/61002/C3



**Armour Grey Windspray** ●  
Satin PR12/80745/CS4



**Colourbond Primrose Domain** ●  
Satin PR12/70289/CS3



**Paperbark Merino** ●  
Satin PR12/70307/CS16  
Gloss PR12/70307/C12



**Wheat Harvest** ●  
Satin PR12/70309/CS2



**Sandbank**  
Satin PR12/70424/CS14



**Moss Vale Sands Evening Haze** ●  
Satin PR12/60185/CS5



**Riversand Stone** ●  
Satin PR12/90157/CS2



**Cove**  
Satin PR12/81551/CS6



**Tea Tree Bushland** ●  
Satin PR12/80361/CS16



**Gully**  
Satin PR12/81552/CS7



**Wallaby**  
Satin PR12/81554/CS6



**Terrain Nuf Brown** ●  
Matt PR12/90861/CM6



**Jasper**  
Satin PR12/90408/CS6  
Gloss PR12/90408/C10



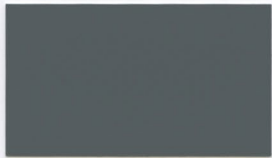
**Cappice Weathered Copper** ●  
Satin PR12/90465/CS5



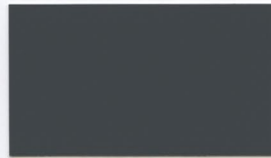
**Loft**  
Satin PR12/90709/CS3



**Slate Grey Woodland Grey** ●  
Satin PR12/80358/CS7  
Gloss PR12/80358/C8



**Basalt**  
Satin PR12/81553/CS6



**Ironstone**  
Satin PR12/80573/CS8



**Monument**  
Satin PR12/81082/CS7  
Gloss PR12/81082/C10



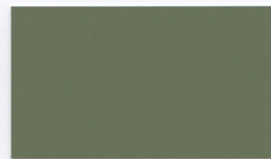
**Deep Ocean Mountain Blue** ●  
Satin PR12/30863/CS16



**Mist Green Pale Eucalypt** ●  
Satin PR12/20209/CS4



**Rivergum Wilderness** ●  
Satin PR12/20207/CS2



**Mangrove**  
Satin PR12/21007/CS6



**Hedge Plantation** ●  
Satin PR12/20376/CS27



**Heritage Green**  
Gloss PR12/20381/C22



**Picton Green Bronze Olive** ●  
Satin PR12/20375/CS6



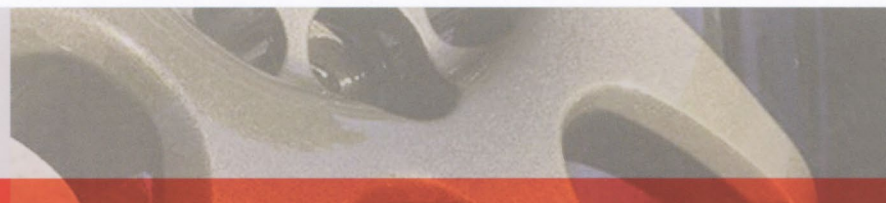
**Bowral Brown**  
Satin PR12/90160/CS4



**Iron Bark Estate** ●  
Satin PR12/20372/CS12



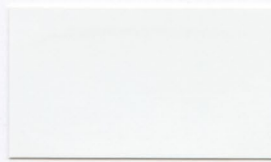
**Black Satin Night Sky** ●  
Satin PR12/708/CS102



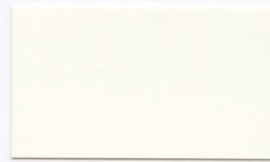


# Setting Standards

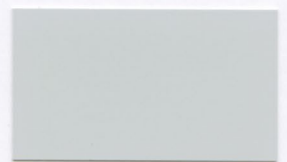
AS2700 & RAL Colour Equivalents



**RAL 9003 Signal White**  
Satin PR12/40197/CS1  
Texture PR12/40011/ST5



**RAL 9010 Pure White**  
Satin PR12/4249/CS89



**RAL 7035 Light Grey**  
Satin PR12/60978/CS1  
Wrinkle PR12/60978/CW2



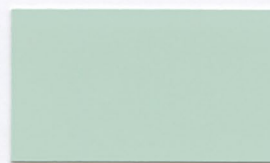
**RAL 1015 Light Ivory**  
Gloss PR12/941/C72



**P31 Dusty Pink**  
Gloss PR12/5748/C2



**RAL 9002 Grey White**  
Satin PR12/40198/CS1  
Gloss PR12/40198/C2



**G32 Opaline**  
Gloss PR12/20837/C8



**T33 Smoke Blue Admiralty Grey**  
Gloss PR12/30003/C2



**JD Yellow**  
**RAL 1018 Zinc Yellow** ●  
Gloss PR12/159/C46



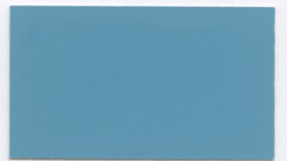
**P23 Lilac**  
Satin PR12/1857/CS3



**N35 Light Grey**  
Satin PR12/60233/CS2



**G44 Palm Green**  
Gloss PR12/20620/C10



**B25 Aqua**  
Gloss PR12/30131/C3



**Y26 Homebush Gold**  
**RAL 1021 Colza Yellow** ●  
Gloss PR12/163/C41



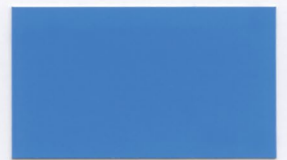
**Y14 Traffic Yellow**  
Gloss PR12/58128/C21



**N45 Koala Grey Stone Grey** ●  
Satin PR12/80934/CS4



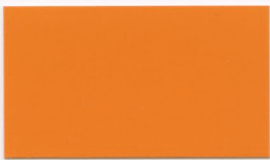
**G22 Serpentine**  
Gloss PR12/20836/C9



**Hunter Blue**  
**RAL 5012 Light Blue** ●  
Satin PR12/30670/CS5



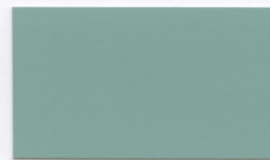
**Golden Yellow**  
**RAL 1003 Signal Yellow** ●  
Gloss PR12/134/C36



**X15 Orange**  
Gloss PR12/6191/CS9  
Wrinkle PR12/6322/TX24



**RAL 7032 Pebble Grey**  
Satin PR12/60232/CS2  
Wrinkle PX50/60232/TX6



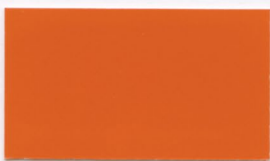
**T45 Cootamundra**  
Gloss PR12/20835/C14



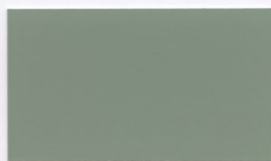
**RAL 5005 Signal Blue**  
Satin PR12/30263/CS6



**RAL 2000 Yellow Orange**  
Gloss PR12/650/C38



**RAL 2009 Traffic Orange**  
Gloss PR12/6162/C21



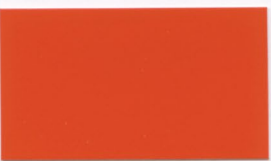
**N42 Storm Grey Transformer Grey** ●  
Gloss PR12/60242/C3



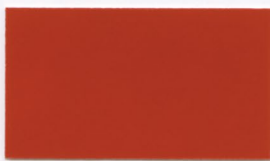
**G34 Avocado Green**  
Gloss PR12/20237/C13



**Auto Black**  
**RAL 9004 Signal Black** ●  
Matt PR18/7120/CM3



**R11 International Orange**  
Gloss PR12/6159/C30



**R13 Signal Red**  
Gloss PE50/5347/C22



**JD Green**  
**RAL 6002 Leaf Green** ●  
Gloss PR12/20726/C12



**G66 Environmental Green**  
Satin PR12/20841/CS7



**RAL 9005 Jet Black**  
Gloss PR12/710/C42  
Wrinkle PR12/7112/TX3

● Alternative name

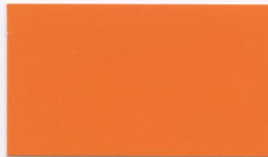
● Practical equivalent

● Clear top coat recommended



# The PowderShop

Colours for every occasion



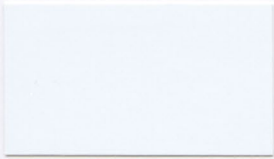
**Bistro Orange**  
Gloss PR12/6186/C35



**Bright Red**  
Gloss PR12/5691/C5



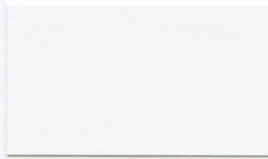
**Flame Red**  
Gloss PR12/5755/C2



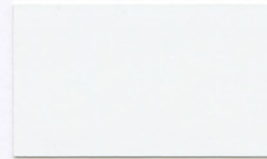
**Bright White**  
Gloss PR12/4429/CS1



**Pearl White**  
Gloss PR12/4370/C4  
Texture PR12/4431/CT3



**Satin White**  
Satin PR12/4371/CS1



**Ranger White**  
Gloss PR12/4801/C10

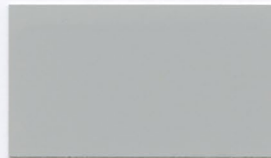


**040 Toyota White**  
Gloss PR12/4726/C5

• Many current and past 'Commercial Vehicle' whites available



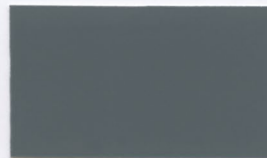
**Shoji White**  
Satin PR12/4752/CS10



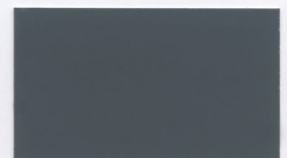
**APO Grey**  
Satin PR12/60169/CS2  
Wrinkle PR12/60480/CW2



**Olde Pewter**  
Satin PR12/81241/CS7



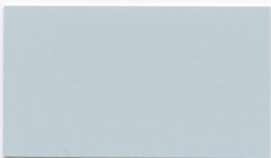
**Notre Dame**  
Gloss PR12/60310/C11  
Wrinkle PR12/60310/CW8



**Berry Grey**  
Satin PR12/80662/CS4



**Ocean Mist**  
Satin PR12/61077/CS9



**Periwinkle**  
Gloss PR12/60397/C3



**Oxytec Silver Grey**  
Matt RPR12/80973/CM3



**Oxytec Citi Pearl**  
Matt RPR16/80827/CM3



**Ultra Silver**  
Satin RPR12/11310/CS2



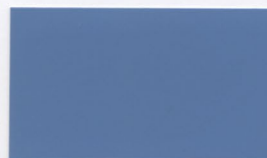
**Rivergum Beige**  
Gloss PR12/70217/C1



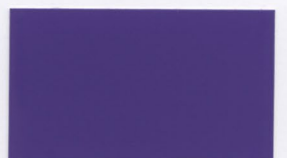
**Pink Blush**  
Gloss PR12/5701/C11



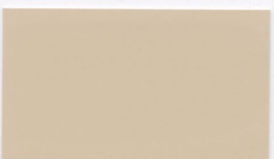
**Lemon Yellow**  
Gloss PR12/58094/C10



**Wedgewood**  
Satin PR12/30734/CS4



**Purple**  
Gloss PR12/1931/C7



**Stone Beige**  
Matt PR18/90492/CM11



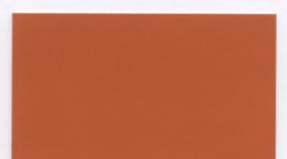
**Pottery**  
Gloss PR12/90314/C1



**Dozer Yellow  
CAT Yellow** •  
Gloss PR12/90717/C4



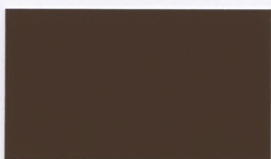
**Claypot**  
Satin PR12/91284/CS6



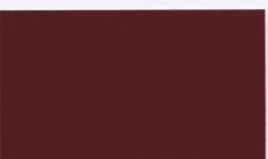
**Terracotta**  
Satin PR12/90313/CS13



**Coffee**  
Satin PR12/90494/CS17



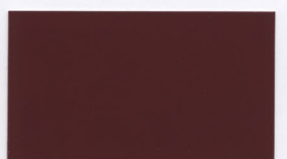
**Vincent Brown**  
Satin PR12/90162/CS17



**Wineberry**  
Gloss PR12/5808/C9



**Claret**  
Gloss PR12/5362/CS4



**Federation Red**  
Gloss PR12/5399/C8







**Acid Green**  
Parakeet •  
Gloss PR12/20825/C3



**Mint Green**  
Gloss PR12/2399/C10



**Cabana Green**  
Mistletoe •  
Gloss PR12/20357/C19



**Turquoise**  
Gloss PR12/20447/C14



**Teal**  
Gloss PR12/20585/C13



**Blaze Blue**  
Gloss PR12/30075/C5



**French Blue**  
Gloss PR12/30213/C3



**Corio Blue**  
Gloss PR12/30624/C6



**Space Blue**  
Gloss PR12/30733/C4



**Navy**  
Gloss PR12/30845/C8



**Oxytec Dark Grey**  
Matt PR18/80495/CM9



**Charcoal**  
Satin PR12/80228/CS5



**Flat Black**  
Matt PR10/708/CM45



**Oxytec Metallic Pearl**  
Matt RPR16/90549/CM3



**Jef Black Pearl**  
Gloss RPR12/7324/C1



**Mercury Silver**  
Satin QPR12/11298/CS10



**Bright Silver** •  
Satin PR12/11109/CS55



**Oxytec Silver Pearl**  
Satin QPR12/11168/CS46



**Oxytec Pewter Pearl**  
Satin RPR12/80826/CS3



**Oxytec Storm Pearl**  
Satin RPR12/81271/CS7



**Oxytec Nepean Silver** •  
Satin QPR12/11094/CS14



**Anodic Bronze Pearl**  
Satin RPR12/90945/CS7



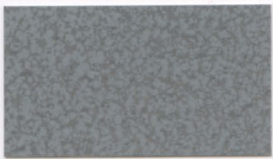
**Colonial Bronze**  
Gloss QPR12/90443/C27



**Black Onyx**  
Satin RPR12/708/CS119



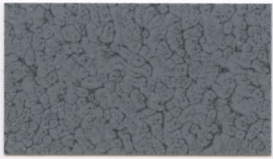
**Charcoal Metallic Pearl**  
Gloss RPR12/80960/C14



**Silver Wrinkle**  
Wrinkle QPR12/1148/CA5



**Watersilk Red**  
Moire SP/5794/ST11  
Interior Use Only



**Hammerstone Silver Grey**  
Wrinkle WPR12/1122/CH2



**Watersilk Black**  
Moire SP/7027/CT2  
Interior Use Only



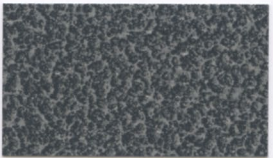
**Ebony Black**  
Texture PE50/7160/CT5



**Antique White**  
Wrinkle QPR12/4465/CA5



**Antique Copper** •  
Wrinkle QPR12/1463/CA2



**Graphite Wrinkle**  
Wrinkle QFF175/1417/CA57  
Interior Use Only



**Hammerstone Black**  
Wrinkle QPR12/1498/CA10



**Antique Black**  
Wrinkle RPR12/1410/CA12



**Oxytech Powder Coatings** is a private company licensed as the exclusive distributor for Protech Oxyplast powder coating throughout Australia.

The Protech Oxyplast group is one of the world's leading providers of powder coatings and associated chemicals, with manufacturing plants and sales offices in over 30 countries.

Operating from a sales office and warehouse in Sydney Oxytech Powder Coatings provide international Qualicoat approved powder coatings for the industrial, architectural, automotive and design industries.

Oxytech's range of colours, textures, and finishes is enhanced with the exclusive and specialised OxyColour fluorescents, high-temperature coatings and high-impact Dormant powders. Outstanding quality finishes to meet a wide variety of applications.

As the Australian business partner and distributor for the world renowned RAL Colour systems, Oxytech carries an extensive selection of fan decks and single sheets across the Classic, Effects and Design range of RAL colours. This facilitates uniform selection and standardised colour matching for projects worldwide.

In recognising the need too for high quality accessories such as coating hooks, silicone plugs and caps, masking tapes, metal fillers, chemical treatments and aerosol touch-up paints, Oxytech has it all.



**Oxytech Powder Coatings Pty Ltd**  
ABN: 19 131 156 217

Unit 6, 8-12 Cooper Street  
Smithfield, NSW

**1300 353 655**  
[www.oxytech.com.au](http://www.oxytech.com.au)

Colours displayed in the "Australian Colour Selector" are indicative only. Colour samples have been matched as close as possible to powder coated samples provided by Oxytech, using modern printing processes. If a more accurate product sample is required please request a powder coated colour swatch from Oxytech Powder Coatings Pty Ltd on 1300 353 655.

All images displayed on the "Australian Colour Selector" are provided by clients of Oxytech and are examples of where Oxyplast Powder Coatings can and have been used.

The information provided in the "Australian Colour Selector" is provided for reference only and is correct at the time of print.

For further information about products please contact Oxytech on **1300 353 655** or [www.oxytech.com.au](http://www.oxytech.com.au)  
Australian Colour Selector – 2nd edition, printed 2018

Copyright 2018 Oxytech Powder Coatings Pty Ltd

